

SPRING MOUNTAIN MEADOWS SUBDIVISION

Located in N 1/2 Section 10, T.18N., R.3E.,
City of McCall, Valley County, Idaho

Instrument # 309021

VALLEY COUNTY, CASCADE, IDAHO
2006-05-22 02:39:14 No. of Pages: 6

Recorded for : SECESH ENG

LELAND G. HEINRICH

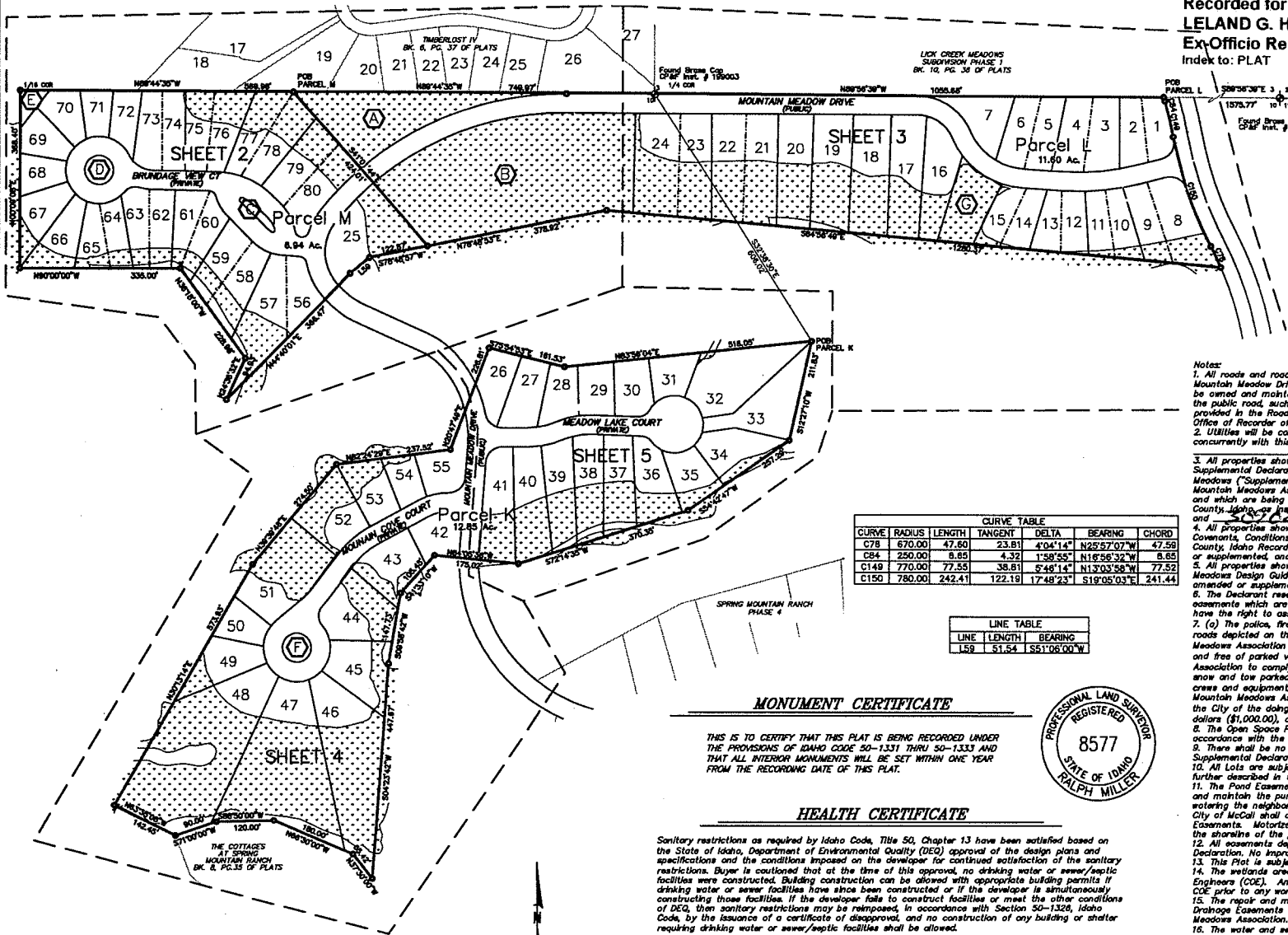
Ex-Officio Recorder Deputy

Index to: PLAT

Fee: 11.00

LEGEND

- SUBDIVISION BOUNDARY
- - - EASEMENT LINE
- COMMON WALL LOT LINE
- NOT MONUMENTED
- FOUND 5/8" IRON PIN
- SET 5/8" X 30" REBAR MKD LS B577
- FOUND 1/2" IRON PIN
- SET 1/2" X 24" REBAR MKD LS B577
- ⊕ FOUND BRASS CAP MONUMENT
- ⊕ OPEN SPACE PARCEL
- ▭ WETLANDS



CURVE TABLE						
CURVE	RADIUS	LENGTH	TANGENT	DELTA	BEARING	CHORD
C78	670.00	47.80	23.91	4:04.14"	N29°57'07"W	47.59
C94	250.00	9.95	4.92	1:58.53"	N18°58'32"W	8.65
C149	770.00	77.55	38.81	5:48.14"	N13°03'58"W	77.52
C150	780.00	242.41	122.19	17:48.23"	S19°05'03"E	241.44

LINE TABLE		
LINE	LENGTH	BEARING
L59	51.54	S51°06'00"W

MONUMENT CERTIFICATE

THIS IS TO CERTIFY THAT THIS PLAT IS BEING RECORDED UNDER THE PROVISIONS OF IDAHO CODE 50-1331 THRU 50-1333 AND THAT ALL INTERIOR MONUMENTS WILL BE SET WITHIN ONE YEAR FROM THE RECORDING DATE OF THIS PLAT.



HEALTH CERTIFICATE

Sanitary restrictions as required by Idaho Code, Title 50, Chapter 13 have been satisfied based on the State of Idaho, Department of Environmental Quality (DEQ) approval of the design plans and specifications and the conditions imposed on the developer for continued satisfaction of the sanitary restrictions. Buyer is cautioned that at the time of this approval, no drinking water or sewer/septic facilities were constructed. Building construction can be allowed with appropriate building permits if drinking water or sewer facilities have since been constructed or if the developer is simultaneously constructing those facilities. If the developer fails to construct facilities or meet the other conditions of DEQ, then sanitary restrictions may be reimposed, in accordance with Section 50-1326, Idaho Code, by the issuance of a certificate of disapproval, and no construction of any building or shelter requiring drinking water or sewer/septic facilities shall be allowed.

City of McCall (City) Resolution 06-08 established a new wastewater policy that controls the issuance of sewer connection permits through their building permit process. As a result, lifting sanitary restrictions is not a guarantee that sewer service will be provided to all lots in the approved project. Availability of individual sewer service connections is contingent upon obtaining building permits under the City's wastewater policy.

309022
Inst. #

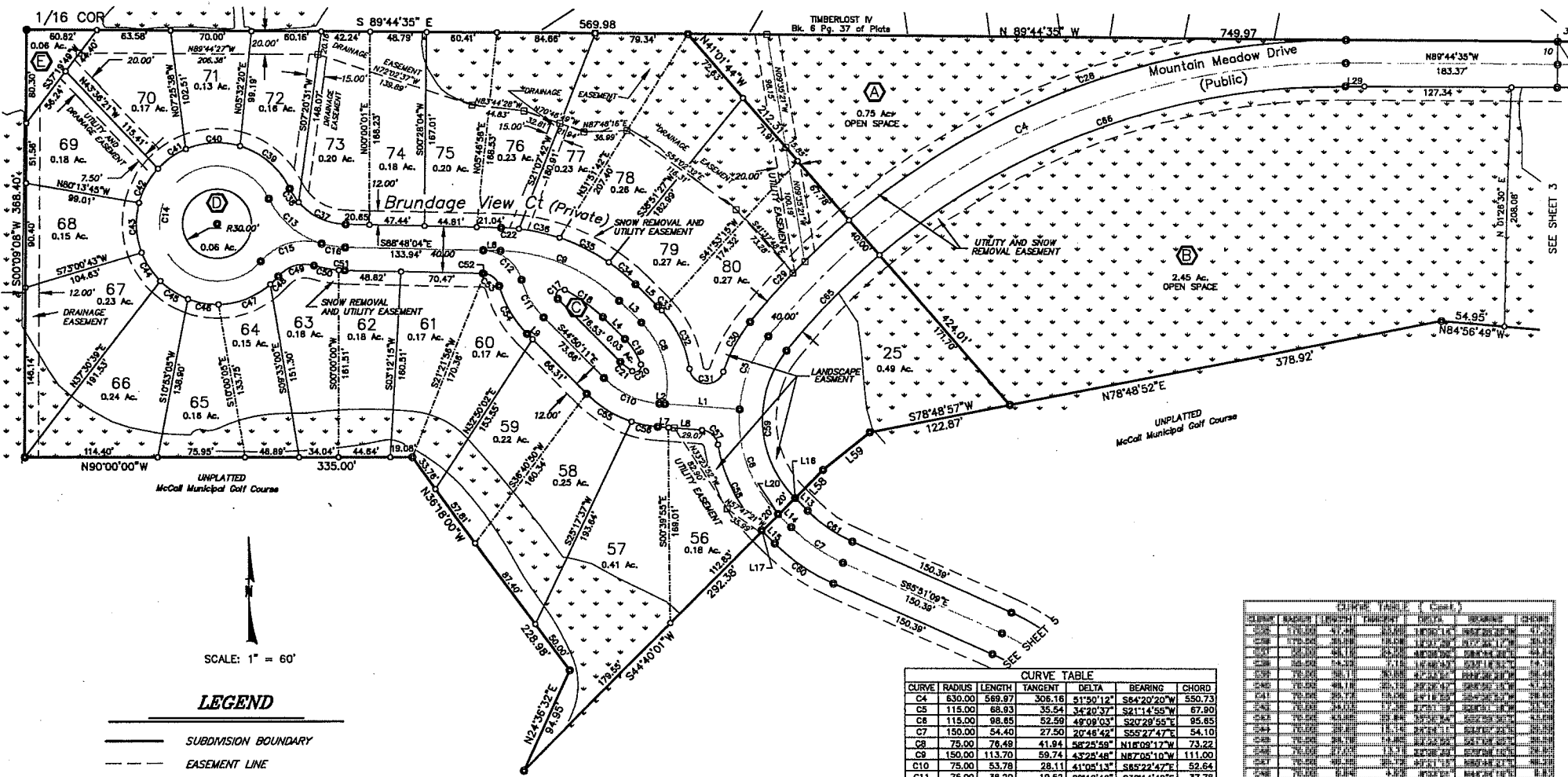
DISTRICT HEALTH DEPARTMENT, EHS

SECESH ENGINEERING, INC.
McCall, Idaho

SCALE: 1" = 150'

SPRING MOUNTAIN MEADOWS SUBDIVISION

Located in N 1/2 Section 10, T.18N., R.3E., BM
City of McCall, Valley County, Idaho



LEGEND

- SUBDIVISION BOUNDARY
- EASEMENT LINE
- COMMON WALL LOT LINE
- NOT MONUMENTED
- FOUND 5/8" IRON PIN
- SET 5/8" X 30" REBAR MKD LS 8577
- FOUND 1/2" IRON PIN
- SET 1/2" X 24" REBAR MKD LS 8577
- FOUND BRASS CAP MONUMENT
- OPEN SPACE PARCEL
- WETLANDS

LINE	LENGTH	BEARING
L1	64.34	S89°55'24"E
L2	4.75	S89°55'24"E
L3	28.82	N45°22'18"W
L4	28.82	S45°22'18"E
L5	28.82	S45°22'18"E
L6	14.85	S88°48'04"E
L7	9.17	S89°55'24"E
L8	29.07	S89°55'24"E
L9	6.61	S44°50'11"E
L13	15.34	S45°04'28"E
L14	16.13	S45°04'28"E
L15	15.15	S45°04'28"E
L16	0.80	S45°04'28"E
L17	0.98	S45°04'28"E
L20	0.89	S45°04'28"E
L29	16.24	N89°44'35"W
L58	34.12	S44°40'01"W
L59	51.54	S51°06'00"W

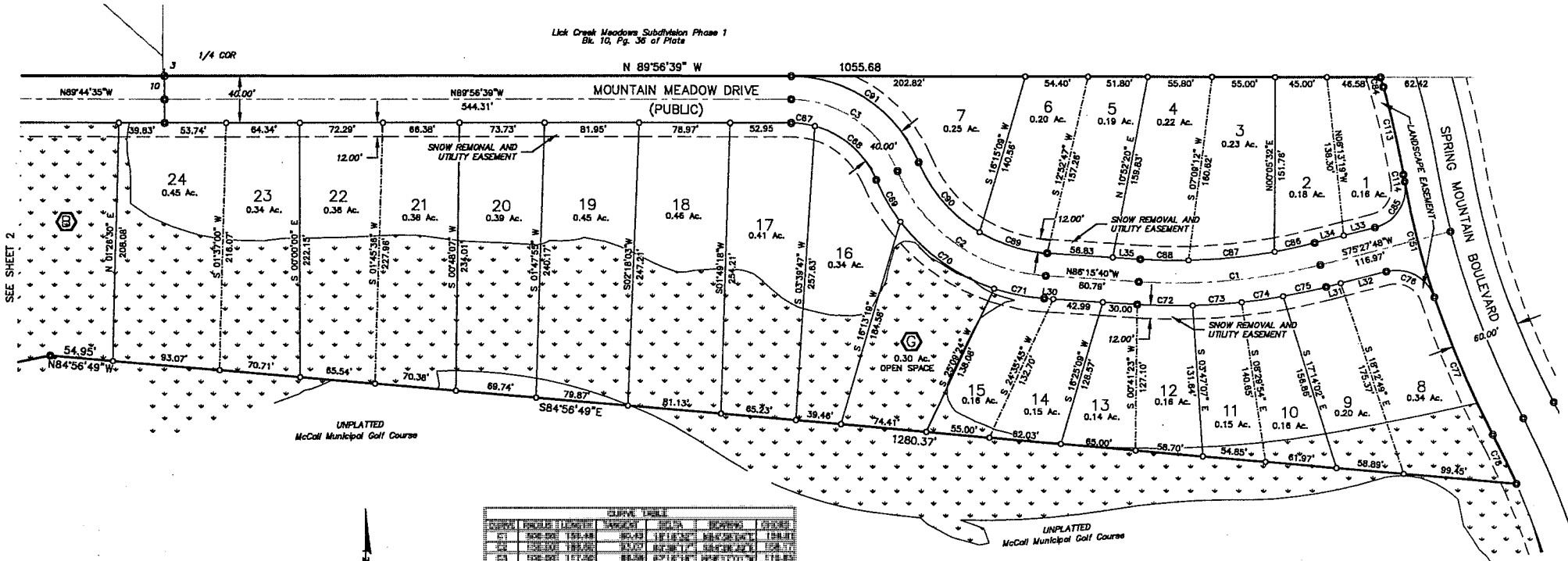
CURVE	RADIUS	LENGTH	TANGENT	DELTA	BEARING	CHORD
C4	630.00	569.97	308.16	51°50'12"	S84°20'20"W	550.73
C5	115.00	68.93	35.54	34°20'37"	S21°14'55"W	67.80
C6	115.00	98.65	52.59	48°09'03"	S07°29'55"E	95.65
C7	150.00	54.40	27.50	20°48'42"	S59°27'47"E	54.10
C8	75.00	78.49	41.84	88°25'59"	N18°05'17"W	73.22
C9	150.00	113.70	59.74	43°29'48"	N87°05'10"W	111.00
C10	75.00	53.78	28.11	41°05'13"	S85°22'47"E	52.64
C11	75.00	36.20	19.52	28°10'46"	S30°14'48"E	37.78
C12	35.00	44.88	25.97	73°08'39"	N57°13'44"W	41.71
C13	75.00	61.73	32.73	47°08'23"	S49°27'12"E	60.00
C14	50.00	258.20	32.73	28°33'41"	S07°20'08"W	54.77
C15	50.00	37.98	32.73	88°25'19"	S7°45'27"W	54.77
C16	75.00	72.21	10.39	18°48'11"	S08°24'52"E	70.58
C17	5.00	14.09	30.82	181°27'42"	S33°37'28"W	9.87
C18	130.00	40.87	20.60	18°00'41"	N54°22'37"W	40.70
C19	55.00	26.13	13.32	27°13'24"	N31°45'34"W	25.89
C20	5.00	12.19	13.61	138°38'51"	N51°41'03"E	9.39
C21	55.00	13.10	6.58	133°38'50"	S51°39'38"E	13.07
C22	170.00	15.43	7.72	5°11'57"	N86°12'05"W	15.42
C23	170.00	72.21	36.66	24°20'28"	N53°40'58"W	71.68
C24	150.00	63.72	32.35	24°20'28"	N53°40'58"W	63.25
C25	130.00	55.23	28.04	24°20'28"	N53°40'58"W	54.81
C28	650.00	485.28	243.11	41°00'48"	S69°45'01"W	455.41
C29	650.00	122.79	61.58	10°49'24"	S43°49'58"W	122.60
C30	135.00	49.24	24.90	20°54'00"	S27°58'13"W	48.97
C31	15.00	40.42	66.03	154°24'08"	S88°16'43"E	29.25
C32	95.00	56.82	29.29	34°18'08"	N28°12'42"W	55.96
C33	95.00	5.02	2.5	3°01'31"	N43°51'31"W	5.02
C34	170.00	29.86	15.02	10°05'57"	N50°28'15"W	29.83

NO.	DATE	DESCRIPTION	BY	CHECKED
1	10/15/21	PREPARED	SECESH	SECESH
2	10/15/21	CHECKED	SECESH	SECESH
3	10/15/21	APPROVED	SECESH	SECESH
4	10/15/21	REVISION	SECESH	SECESH
5	10/15/21	REVISION	SECESH	SECESH
6	10/15/21	REVISION	SECESH	SECESH
7	10/15/21	REVISION	SECESH	SECESH
8	10/15/21	REVISION	SECESH	SECESH
9	10/15/21	REVISION	SECESH	SECESH
10	10/15/21	REVISION	SECESH	SECESH
11	10/15/21	REVISION	SECESH	SECESH
12	10/15/21	REVISION	SECESH	SECESH
13	10/15/21	REVISION	SECESH	SECESH
14	10/15/21	REVISION	SECESH	SECESH
15	10/15/21	REVISION	SECESH	SECESH
16	10/15/21	REVISION	SECESH	SECESH
17	10/15/21	REVISION	SECESH	SECESH
18	10/15/21	REVISION	SECESH	SECESH
19	10/15/21	REVISION	SECESH	SECESH
20	10/15/21	REVISION	SECESH	SECESH
21	10/15/21	REVISION	SECESH	SECESH
22	10/15/21	REVISION	SECESH	SECESH
23	10/15/21	REVISION	SECESH	SECESH
24	10/15/21	REVISION	SECESH	SECESH
25	10/15/21	REVISION	SECESH	SECESH
26	10/15/21	REVISION	SECESH	SECESH
27	10/15/21	REVISION	SECESH	SECESH
28	10/15/21	REVISION	SECESH	SECESH
29	10/15/21	REVISION	SECESH	SECESH
30	10/15/21	REVISION	SECESH	SECESH
31	10/15/21	REVISION	SECESH	SECESH
32	10/15/21	REVISION	SECESH	SECESH
33	10/15/21	REVISION	SECESH	SECESH
34	10/15/21	REVISION	SECESH	SECESH
35	10/15/21	REVISION	SECESH	SECESH
36	10/15/21	REVISION	SECESH	SECESH
37	10/15/21	REVISION	SECESH	SECESH
38	10/15/21	REVISION	SECESH	SECESH
39	10/15/21	REVISION	SECESH	SECESH
40	10/15/21	REVISION	SECESH	SECESH
41	10/15/21	REVISION	SECESH	SECESH
42	10/15/21	REVISION	SECESH	SECESH
43	10/15/21	REVISION	SECESH	SECESH
44	10/15/21	REVISION	SECESH	SECESH
45	10/15/21	REVISION	SECESH	SECESH
46	10/15/21	REVISION	SECESH	SECESH
47	10/15/21	REVISION	SECESH	SECESH
48	10/15/21	REVISION	SECESH	SECESH
49	10/15/21	REVISION	SECESH	SECESH
50	10/15/21	REVISION	SECESH	SECESH
51	10/15/21	REVISION	SECESH	SECESH
52	10/15/21	REVISION	SECESH	SECESH
53	10/15/21	REVISION	SECESH	SECESH
54	10/15/21	REVISION	SECESH	SECESH
55	10/15/21	REVISION	SECESH	SECESH
56	10/15/21	REVISION	SECESH	SECESH
57	10/15/21	REVISION	SECESH	SECESH
58	10/15/21	REVISION	SECESH	SECESH
59	10/15/21	REVISION	SECESH	SECESH
60	10/15/21	REVISION	SECESH	SECESH
61	10/15/21	REVISION	SECESH	SECESH
62	10/15/21	REVISION	SECESH	SECESH
63	10/15/21	REVISION	SECESH	SECESH
64	10/15/21	REVISION	SECESH	SECESH
65	10/15/21	REVISION	SECESH	SECESH
66	10/15/21	REVISION	SECESH	SECESH
67	10/15/21	REVISION	SECESH	SECESH
68	10/15/21	REVISION	SECESH	SECESH
69	10/15/21	REVISION	SECESH	SECESH
70	10/15/21	REVISION	SECESH	SECESH
71	10/15/21	REVISION	SECESH	SECESH
72	10/15/21	REVISION	SECESH	SECESH
73	10/15/21	REVISION	SECESH	SECESH
74	10/15/21	REVISION	SECESH	SECESH
75	10/15/21	REVISION	SECESH	SECESH
76	10/15/21	REVISION	SECESH	SECESH
77	10/15/21	REVISION	SECESH	SECESH
78	10/15/21	REVISION	SECESH	SECESH
79	10/15/21	REVISION	SECESH	SECESH
80	10/15/21	REVISION	SECESH	SECESH
81	10/15/21	REVISION	SECESH	SECESH
82	10/15/21	REVISION	SECESH	SECESH
83	10/15/21	REVISION	SECESH	SECESH
84	10/15/21	REVISION	SECESH	SECESH
85	10/15/21	REVISION	SECESH	SECESH
86	10/15/21	REVISION	SECESH	SECESH
87	10/15/21	REVISION	SECESH	SECESH
88	10/15/21	REVISION	SECESH	SECESH
89	10/15/21	REVISION	SECESH	SECESH
90	10/15/21	REVISION	SECESH	SECESH
91	10/15/21	REVISION	SECESH	SECESH
92	10/15/21	REVISION	SECESH	SECESH
93	10/15/21	REVISION	SECESH	SECESH
94	10/15/21	REVISION	SECESH	SECESH
95	10/15/21	REVISION	SECESH	SECESH
96	10/15/21	REVISION	SECESH	SECESH
97	10/15/21	REVISION	SECESH	SECESH
98	10/15/21	REVISION	SECESH	SECESH
99	10/15/21	REVISION	SECESH	SECESH
100	10/15/21	REVISION	SECESH	SECESH

SECESH ENGINEERING, INC.
McCall, Idaho

SPRING MOUNTAIN MEADOWS SUBDIVISION

Located in N 1/2 of Section 10, T.18N., R.3E., BM
City of McCall, Valley County, Idaho



SEE SHEET 2

Lick Creek Meadows Subdivision Phase 1
Blk. 10, Pg. 36 of Plat

UNPLATTED
McCall Municipal Golf Course

UNPLATTED
McCall Municipal Golf Course

LEGEND

- SUBDIVISION BOUNDARY
- - - EASEMENT LINE
- - - COMMON WALL LOT LINE
- NOT MONUMENTED
- FOUND 5/8" IRON PIN
- SET 5/8" X 30" REBAR MKD LS
- FOUND 1/2" IRON PIN
- SET 1/2" X 24" REBAR MKD LS
- FOUND BRASS CAP MONUMENT
- ⬡ OPEN SPACE PARCEL
- ◻ WETLANDS

SCALE: 1" = 60'

LOT	AREA	BEARING	DISTANCE	MARK
1	0.18	N 07° 15' 30" E	116.97	●
2	0.18	N 07° 15' 30" E	116.97	●
3	0.23	N 07° 15' 30" E	116.97	●
4	0.22	N 07° 15' 30" E	116.97	●
5	0.19	N 07° 15' 30" E	116.97	●
6	0.20	N 07° 15' 30" E	116.97	●
7	0.25	N 07° 15' 30" E	116.97	●
8	0.18	N 07° 15' 30" E	116.97	●
9	0.18	N 07° 15' 30" E	116.97	●
10	0.18	N 07° 15' 30" E	116.97	●
11	0.15	N 07° 15' 30" E	116.97	●
12	0.16	N 07° 15' 30" E	116.97	●
13	0.14	N 07° 15' 30" E	116.97	●
14	0.15	N 07° 15' 30" E	116.97	●
15	0.16	N 07° 15' 30" E	116.97	●
16	0.34	N 07° 15' 30" E	116.97	●
17	0.41	N 07° 15' 30" E	116.97	●
18	0.46	N 07° 15' 30" E	116.97	●
19	0.45	N 07° 15' 30" E	116.97	●
20	0.39	N 07° 15' 30" E	116.97	●
21	0.38	N 07° 15' 30" E	116.97	●
22	0.38	N 07° 15' 30" E	116.97	●
23	0.34	N 07° 15' 30" E	116.97	●
24	0.45	N 07° 15' 30" E	116.97	●

LOT	AREA	BEARING	DISTANCE	MARK
1	0.18	N 07° 15' 30" E	116.97	●
2	0.18	N 07° 15' 30" E	116.97	●
3	0.23	N 07° 15' 30" E	116.97	●
4	0.22	N 07° 15' 30" E	116.97	●
5	0.19	N 07° 15' 30" E	116.97	●
6	0.20	N 07° 15' 30" E	116.97	●
7	0.25	N 07° 15' 30" E	116.97	●
8	0.18	N 07° 15' 30" E	116.97	●
9	0.18	N 07° 15' 30" E	116.97	●
10	0.18	N 07° 15' 30" E	116.97	●
11	0.15	N 07° 15' 30" E	116.97	●
12	0.16	N 07° 15' 30" E	116.97	●
13	0.14	N 07° 15' 30" E	116.97	●
14	0.15	N 07° 15' 30" E	116.97	●
15	0.16	N 07° 15' 30" E	116.97	●
16	0.34	N 07° 15' 30" E	116.97	●
17	0.41	N 07° 15' 30" E	116.97	●
18	0.46	N 07° 15' 30" E	116.97	●
19	0.45	N 07° 15' 30" E	116.97	●
20	0.39	N 07° 15' 30" E	116.97	●
21	0.38	N 07° 15' 30" E	116.97	●
22	0.38	N 07° 15' 30" E	116.97	●
23	0.34	N 07° 15' 30" E	116.97	●
24	0.45	N 07° 15' 30" E	116.97	●

SECESH ENGINEERING, INC.
McCall, Idaho

SPRING MOUNTAIN MEADOWS SUBDIVISION

Located in N 1/2 Section 10, T.18N., R.3E.,
City of McCall, Valley County, Idaho

LEGEND

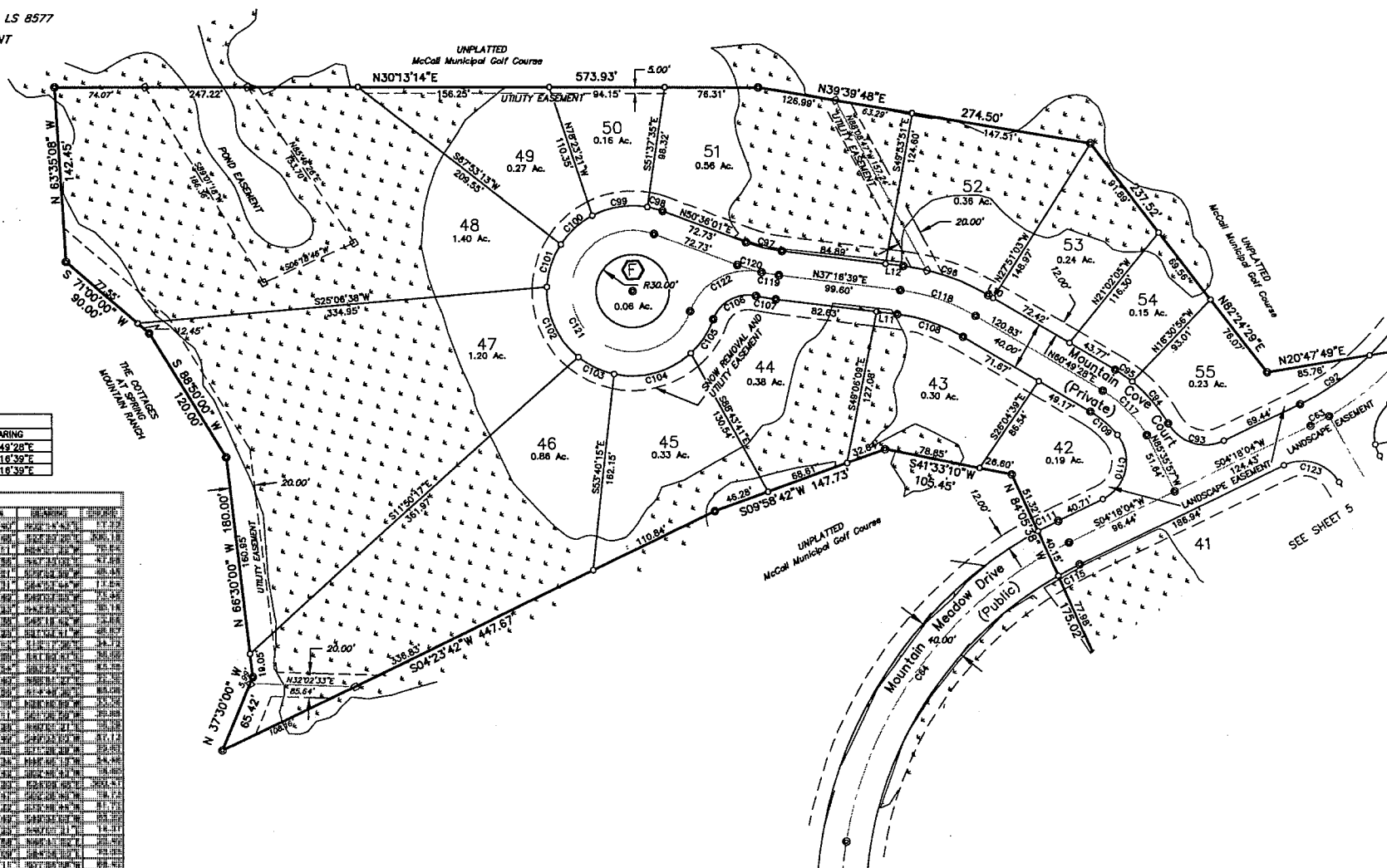
- SUBDIVISION BOUNDARY
- EASEMENT LINE
- COMMON WALL LOT LINE
- NOT MONUMENTED
- FOUND 5/8" IRON PIN
- SET 5/8" X 30" REBAR MKD LS B577
- FOUND 1/2" IRON PIN
- SET 1/2" X 24" REBAR MKD LS B577
- FOUND BRASS CAP MONUMENT
- OPEN SPACE PARCEL
- WETLANDS

SCALE: 1" = 60'



LINE	LENGTH	BEARING
L10	4.64	N62°49'28"E
L11	18.97	N37°18'39"E
L12	14.71	N37°18'39"E

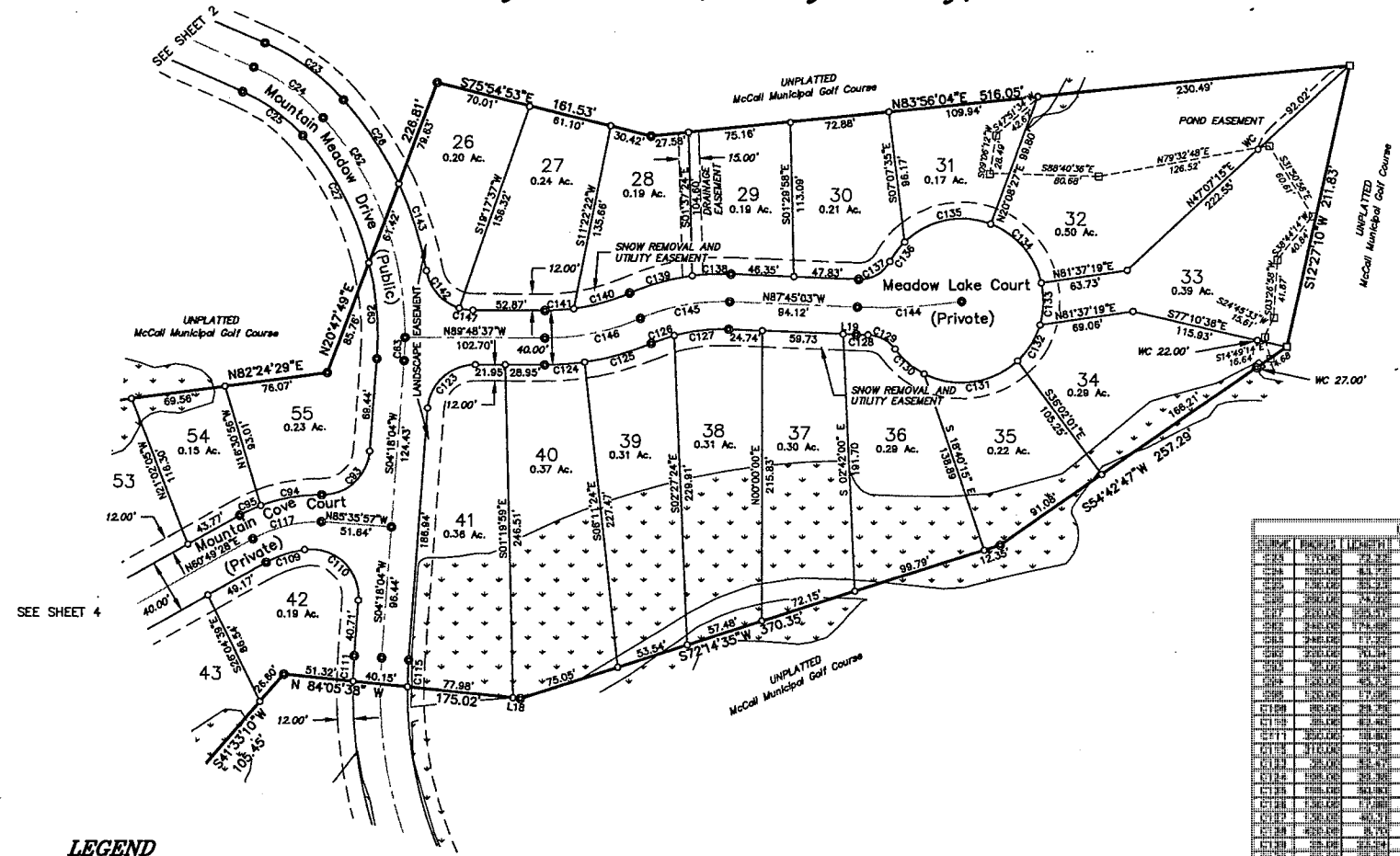
LINE	LENGTH	BEARING	AREA
L1	12.00	N30°13'14"E	0.16
L2	12.00	N30°13'14"E	0.16
L3	12.00	N30°13'14"E	0.16
L4	12.00	N30°13'14"E	0.16
L5	12.00	N30°13'14"E	0.16
L6	12.00	N30°13'14"E	0.16
L7	12.00	N30°13'14"E	0.16
L8	12.00	N30°13'14"E	0.16
L9	12.00	N30°13'14"E	0.16
L10	12.00	N30°13'14"E	0.16
L11	12.00	N30°13'14"E	0.16
L12	12.00	N30°13'14"E	0.16
L13	12.00	N30°13'14"E	0.16
L14	12.00	N30°13'14"E	0.16
L15	12.00	N30°13'14"E	0.16
L16	12.00	N30°13'14"E	0.16
L17	12.00	N30°13'14"E	0.16
L18	12.00	N30°13'14"E	0.16
L19	12.00	N30°13'14"E	0.16
L20	12.00	N30°13'14"E	0.16
L21	12.00	N30°13'14"E	0.16
L22	12.00	N30°13'14"E	0.16
L23	12.00	N30°13'14"E	0.16
L24	12.00	N30°13'14"E	0.16
L25	12.00	N30°13'14"E	0.16
L26	12.00	N30°13'14"E	0.16
L27	12.00	N30°13'14"E	0.16
L28	12.00	N30°13'14"E	0.16
L29	12.00	N30°13'14"E	0.16
L30	12.00	N30°13'14"E	0.16
L31	12.00	N30°13'14"E	0.16
L32	12.00	N30°13'14"E	0.16
L33	12.00	N30°13'14"E	0.16
L34	12.00	N30°13'14"E	0.16
L35	12.00	N30°13'14"E	0.16
L36	12.00	N30°13'14"E	0.16
L37	12.00	N30°13'14"E	0.16
L38	12.00	N30°13'14"E	0.16
L39	12.00	N30°13'14"E	0.16
L40	12.00	N30°13'14"E	0.16
L41	12.00	N30°13'14"E	0.16
L42	12.00	N30°13'14"E	0.16
L43	12.00	N30°13'14"E	0.16
L44	12.00	N30°13'14"E	0.16
L45	12.00	N30°13'14"E	0.16
L46	12.00	N30°13'14"E	0.16
L47	12.00	N30°13'14"E	0.16
L48	12.00	N30°13'14"E	0.16
L49	12.00	N30°13'14"E	0.16
L50	12.00	N30°13'14"E	0.16
L51	12.00	N30°13'14"E	0.16
L52	12.00	N30°13'14"E	0.16
L53	12.00	N30°13'14"E	0.16
L54	12.00	N30°13'14"E	0.16
L55	12.00	N30°13'14"E	0.16
L56	12.00	N30°13'14"E	0.16
L57	12.00	N30°13'14"E	0.16
L58	12.00	N30°13'14"E	0.16
L59	12.00	N30°13'14"E	0.16
L60	12.00	N30°13'14"E	0.16
L61	12.00	N30°13'14"E	0.16
L62	12.00	N30°13'14"E	0.16
L63	12.00	N30°13'14"E	0.16
L64	12.00	N30°13'14"E	0.16
L65	12.00	N30°13'14"E	0.16
L66	12.00	N30°13'14"E	0.16
L67	12.00	N30°13'14"E	0.16
L68	12.00	N30°13'14"E	0.16
L69	12.00	N30°13'14"E	0.16
L70	12.00	N30°13'14"E	0.16
L71	12.00	N30°13'14"E	0.16
L72	12.00	N30°13'14"E	0.16
L73	12.00	N30°13'14"E	0.16
L74	12.00	N30°13'14"E	0.16
L75	12.00	N30°13'14"E	0.16
L76	12.00	N30°13'14"E	0.16
L77	12.00	N30°13'14"E	0.16
L78	12.00	N30°13'14"E	0.16
L79	12.00	N30°13'14"E	0.16
L80	12.00	N30°13'14"E	0.16
L81	12.00	N30°13'14"E	0.16
L82	12.00	N30°13'14"E	0.16
L83	12.00	N30°13'14"E	0.16
L84	12.00	N30°13'14"E	0.16
L85	12.00	N30°13'14"E	0.16
L86	12.00	N30°13'14"E	0.16
L87	12.00	N30°13'14"E	0.16
L88	12.00	N30°13'14"E	0.16
L89	12.00	N30°13'14"E	0.16
L90	12.00	N30°13'14"E	0.16
L91	12.00	N30°13'14"E	0.16
L92	12.00	N30°13'14"E	0.16
L93	12.00	N30°13'14"E	0.16
L94	12.00	N30°13'14"E	0.16
L95	12.00	N30°13'14"E	0.16
L96	12.00	N30°13'14"E	0.16
L97	12.00	N30°13'14"E	0.16
L98	12.00	N30°13'14"E	0.16
L99	12.00	N30°13'14"E	0.16
L100	12.00	N30°13'14"E	0.16



SECESH ENGINEERING, INC.
McCall, Idaho

SPRING MOUNTAIN MEADOWS SUBDIVISION

Located in N 1/2 Section 10, T.18N., R.3E.,
City of McCall, Valley County, Idaho



SEE SHEET 4

LEGEND

- SUBDIVISION BOUNDARY
- - - EASEMENT LINE
- - - COMMON WALL LOT LINE
- NOT MONUMENTED
- FOUND 5/8" IRON PIN
- SET 5/8" X 30" REBAR MKD LS 8577
- FOUND 1/2" IRON PIN
- SET 1/2" X 24" REBAR MKD LS 8577
- ⊕ FOUND BRASS CAP MONUMENT
- ⬡ OPEN SPACE PARCEL
- ◻ WETLANDS



LINE TABLE		
LINE	LENGTH	BEARING
L18	5.57	N84°05'38"W
L19	9.66	N87°45'03"W

CURVE TABLE									
LINE	BEARING	LENGTH	CHORD	ANGLE	AREA	PERCENT	PERCENT	PERCENT	PERCENT
C101	S75°54'53"E	70.01	161.53	161.53	0.00	0.00	0.00	0.00	0.00
C102	S18°17'37"W	158.32	30.42	27.58	75.16	72.88	109.94	230.49	99.07
C103	S11°22'22"W	135.86	75.00	75.00	75.00	72.88	109.94	230.49	99.07
C104	S07°07'35"E	86.17	46.35	47.83	46.35	47.83	46.35	47.83	46.35
C105	S01°29'58"E	113.09	47.83	47.83	47.83	46.35	47.83	46.35	46.35
C106	S07°07'35"E	86.17	46.35	47.83	46.35	47.83	46.35	47.83	46.35
C107	S07°07'35"E	86.17	46.35	47.83	46.35	47.83	46.35	47.83	46.35
C108	S07°07'35"E	86.17	46.35	47.83	46.35	47.83	46.35	47.83	46.35
C109	S07°07'35"E	86.17	46.35	47.83	46.35	47.83	46.35	47.83	46.35
C110	S07°07'35"E	86.17	46.35	47.83	46.35	47.83	46.35	47.83	46.35
C111	S07°07'35"E	86.17	46.35	47.83	46.35	47.83	46.35	47.83	46.35
C112	S07°07'35"E	86.17	46.35	47.83	46.35	47.83	46.35	47.83	46.35
C113	S07°07'35"E	86.17	46.35	47.83	46.35	47.83	46.35	47.83	46.35
C114	S07°07'35"E	86.17	46.35	47.83	46.35	47.83	46.35	47.83	46.35
C115	S07°07'35"E	86.17	46.35	47.83	46.35	47.83	46.35	47.83	46.35
C116	S07°07'35"E	86.17	46.35	47.83	46.35	47.83	46.35	47.83	46.35
C117	S07°07'35"E	86.17	46.35	47.83	46.35	47.83	46.35	47.83	46.35
C118	S07°07'35"E	86.17	46.35	47.83	46.35	47.83	46.35	47.83	46.35
C119	S07°07'35"E	86.17	46.35	47.83	46.35	47.83	46.35	47.83	46.35
C120	S07°07'35"E	86.17	46.35	47.83	46.35	47.83	46.35	47.83	46.35
C121	S07°07'35"E	86.17	46.35	47.83	46.35	47.83	46.35	47.83	46.35
C122	S07°07'35"E	86.17	46.35	47.83	46.35	47.83	46.35	47.83	46.35
C123	S07°07'35"E	86.17	46.35	47.83	46.35	47.83	46.35	47.83	46.35
C124	S07°07'35"E	86.17	46.35	47.83	46.35	47.83	46.35	47.83	46.35
C125	S07°07'35"E	86.17	46.35	47.83	46.35	47.83	46.35	47.83	46.35
C126	S07°07'35"E	86.17	46.35	47.83	46.35	47.83	46.35	47.83	46.35
C127	S07°07'35"E	86.17	46.35	47.83	46.35	47.83	46.35	47.83	46.35
C128	S07°07'35"E	86.17	46.35	47.83	46.35	47.83	46.35	47.83	46.35
C129	S07°07'35"E	86.17	46.35	47.83	46.35	47.83	46.35	47.83	46.35
C130	S07°07'35"E	86.17	46.35	47.83	46.35	47.83	46.35	47.83	46.35
C131	S07°07'35"E	86.17	46.35	47.83	46.35	47.83	46.35	47.83	46.35
C132	S07°07'35"E	86.17	46.35	47.83	46.35	47.83	46.35	47.83	46.35
C133	S07°07'35"E	86.17	46.35	47.83	46.35	47.83	46.35	47.83	46.35
C134	S07°07'35"E	86.17	46.35	47.83	46.35	47.83	46.35	47.83	46.35
C135	S07°07'35"E	86.17	46.35	47.83	46.35	47.83	46.35	47.83	46.35
C136	S07°07'35"E	86.17	46.35	47.83	46.35	47.83	46.35	47.83	46.35
C137	S07°07'35"E	86.17	46.35	47.83	46.35	47.83	46.35	47.83	46.35
C138	S07°07'35"E	86.17	46.35	47.83	46.35	47.83	46.35	47.83	46.35
C139	S07°07'35"E	86.17	46.35	47.83	46.35	47.83	46.35	47.83	46.35
C140	S07°07'35"E	86.17	46.35	47.83	46.35	47.83	46.35	47.83	46.35
C141	S07°07'35"E	86.17	46.35	47.83	46.35	47.83	46.35	47.83	46.35
C142	S07°07'35"E	86.17	46.35	47.83	46.35	47.83	46.35	47.83	46.35
C143	S07°07'35"E	86.17	46.35	47.83	46.35	47.83	46.35	47.83	46.35
C144	S07°07'35"E	86.17	46.35	47.83	46.35	47.83	46.35	47.83	46.35
C145	S07°07'35"E	86.17	46.35	47.83	46.35	47.83	46.35	47.83	46.35
C146	S07°07'35"E	86.17	46.35	47.83	46.35	47.83	46.35	47.83	46.35
C147	S07°07'35"E	86.17	46.35	47.83	46.35	47.83	46.35	47.83	46.35
C148	S07°07'35"E	86.17	46.35	47.83	46.35	47.83	46.35	47.83	46.35
C149	S07°07'35"E	86.17	46.35	47.83	46.35	47.83	46.35	47.83	46.35
C150	S07°07'35"E	86.17	46.35	47.83	46.35	47.83	46.35	47.83	46.35
C151	S07°07'35"E	86.17	46.35	47.83	46.35	47.83	46.35	47.83	46.35
C152	S07°07'35"E	86.17	46.35	47.83	46.35	47.83	46.35	47.83	46.35
C153	S07°07'35"E	86.17	46.35	47.83	46.35	47.83	46.35	47.83	46.35
C154	S07°07'35"E	86.17	46.35	47.83	46.35	47.83	46.35	47.83	46.35
C155	S07°07'35"E	86.17	46.35	47.83	46.35	47.83	46.35	47.83	46.35
C156	S07°07'35"E	86.17	46.35	47.83	46.35	47.83	46.35	47.83	46.35
C157	S07°07'35"E	86.17	46.35	47.83	46.35	47.83	46.35	47.83	46.35
C158	S07°07'35"E	86.17	46.35	47.83	46.35	47.83	46.35	47.83	46.35
C159	S07°07'35"E	86.17	46.35	47.83	46.35	47.83	46.35	47.83	46.35
C160	S07°07'35"E	86.17	46.35	47.83	46.35	47.83	46.35	47.83	46.35
C161	S07°07'35"E	86.17	46.35	47.83	46.35	47.83	46.35	47.83	46.35
C162	S07°07'35"E	86.17	46.35	47.83	46.35	47.83	46.35	47.83	46.35
C163	S07°07'35"E	86.17	46.35	47.83	46.35	47.83	46.35	47.83	46.35
C164	S07°07'35"E	86.17	46.35	47.83	46.35	47.83	46.35	47.83	46.35
C165	S07°07'35"E	86.17	46.35	47.83	46.35	47.83	46.35	47.83	46.35
C166	S07°07'35"E	86.17	46.35	47.83	46.35	47.83	46.35	47.83	46.35
C167	S07°07'35"E	86.17	46.35	47.83	46.35	47.83	46.35	47.83	46.35
C168	S07°07'35"E	86.17	46.35	47.83	46.35	47.83	46.35	47.83	46.35
C169	S07°07'35"E	86.17	46.35	47.83	46.35	47.83	46.35	47.83	46.35
C170	S07°07'35"E	86.17	46.35	47.83	46.35	47.83	46.35	47.83	46.35
C171	S07°07'35"E	86.17	46.35	47.83	46.35	47.83	46.35	47.83	46.35
C172	S07°07'35"E	86.17	46.35	47.83	46.35	47.83	46.35	47.83	46.35
C173	S07°07'35"E	86.17	46.35	47.83	46.35	47.83	46.35	47.83	46.35
C174	S07°07'35"E	86.17	46.35	47.83	46.35	47.83	46.35	47.83	46.35
C175	S07°07'35"E	86.17	46.35	47.83	46.35	47.83	46.35	47.83	46.35
C176	S07°07'35"E	86.17	46.35	47.83	46.35	47.83	46.35	47.83	46.35
C177	S07°07'35"E	86.17	46.35	47.83	46.35	47.83	46.35	47.83	46.35
C178	S07°07'35"E	86.17	46.35	47.83	46.35	47.83	46.35	47.83	46.35
C179	S07°07'35"E	86.17	46.35	47.83	46.35	47.83	46.35	47.83	46.35
C180	S07°07'35"E	86.17	46.35	47.83	46.35	47.83	46.35	47.83	46.35
C181	S07°07'35"E	86.17	46.35	47.83	46.35	47.83	46.35	47.83	46.35
C182	S07°07'35"E	86.17	46.35	47.83	46.35	47.83	46.35	47.83	46.35
C183	S07°07'35"E	86.17	46.35	47.83	46.35	47.83	46.35	47.83	46.35
C184	S07°07'35"E	86.17	46.35	47.83	46.35	47.83	46.35	47.83	46.35
C185	S07°07'35"E	86.17	46.35	47.83	46.35	47.83	46.35	47.83	46.35
C186	S07°07'35"E	86.17	46.35	47.83	46.35	47.83	46.35	47.83	46.35
C187	S07°07'35"E	86.17	46.35	47.83	46.35	47.83	46.35	47.83	46.35
C188	S07°07'35"E	86.17	46.35	47.83	46.35	47.83	46.35	47.83	46.35
C189	S07°07'35"E	86.17	46.35	47.83	46.35	47.83	46.35	47.83	46.35
C190	S07°07'35"E	86.17	46.35	47.83	46.35	47.83	46.35	47.83	46.35
C191	S07°07'35"E	86.17	46.35	47.83	46.35	47.83	46.35	47.83	46.35
C192	S07°07'35"E	86.17	46.35	47.83	46.35	47.83	46.35	47.83	46.35
C193	S07°07'35"E	86.17	46.35	47.83	46.35	47.83	46.35	47.83	46.35
C194	S07°07'35"E	86.17	46.35	47.83	46.35	47.83	46.35	47.83	46.35
C195	S07°07'35"E	86.17	46.35	47.83	46.35	47.83	46.35	47.83	46.35
C196	S07°07'35"E	86.17	46.35	47.83	46.35	47.83	46.35	47.83	46.35
C197	S07°07'35"E	86.17	46.35	47.83	46.35	47.83	46.35	47.83	46.35
C198	S07°07'35"E	86.17	46.35	47.83	46.35	47.83	46.35	47.83	46.35
C199	S07°07'35"E	86.17	46.35	47.83	46.35	47.83	46.35	47.83	46.35
C200	S07°07'35"E	86.17	46.35	47.83	46.35	47.83	46.35	47.83	46.35

SECESH ENGINEERING, INC.
McCall, Idaho

SPRING MOUNTAIN MEADOWS SUBDIVISION

Located in N 1/2 Section 10, T.18N., R.3E.,
City of McCall, Valley County, Idaho

CERTIFICATE OF OWNER

OF THE PROPERTY HEREWATER DESCRIBED:
LEGAL DESCRIPTIONS
SPRING MOUNTAIN MEADOWS SUBDIVISION

Three parcels of land, known as parcels "1", "2", and "3" containing a total of 31.30 acres, situated in the north 1/2 of Section 10, Township 18 North, Range 3 East, Boise Meridian, City of McCall, Valley County, Idaho, more particularly described as follows:

PARCEL 1:

Commencing at the northeast corner of said Section 10, as shown on the plat of Spring Mountain Ranch Subdivision No. 1, as recorded in Book 8, Page 38 of plats, filed as instrument #199033;
thence along the north line of said Section 10, N.89°55'39"W, 2631.45 feet to the north 1/4 corner of said Section;
thence, departing said north line, S.32°E38'30"E, 606.02 feet to the Point of Beginning;
thence S.12°27'10"W, 211.83 feet to a point;
thence S.54°42'47"W, 257.29 feet to a point;
thence S.72°14'35"W, 370.36 feet to a point;
thence N.84°05'39"W, 172.02 feet to a point;
thence S.41°33'10"W, 105.45 feet to a point;
thence S.97°54'42"W, 147.73 feet to a point;
thence S.42°34'42"W, 447.67 feet to a point;
thence N.37°30'00"W, 65.42 feet to a point;
thence N.06°30'00"W, 100.00 feet to a point;
thence S.88°50'00"W, 120.00 feet to a point;
thence S.71°00'00"W, 90.00 feet to a point;
thence N.43°33'08"W, 142.45 feet to a point;
thence N.30°13'14"E, 573.83 feet to a point;
thence N.39°30'48"E, 274.50 feet to a point;
thence N.82°24'29"E, 237.32 feet to a point;
thence N.20°47'49"E, 228.81 feet to a point;
thence S.75°54'53"E, 181.53 feet to a point;
thence N.83°58'04"E, 518.05 feet to the Point of Beginning.
Containing 12.85 acres.

PARCEL 2:

Commencing at the northeast corner of said Section 10, as shown on the plat of Spring Mountain Ranch Subdivision No. 1, as recorded in Book 8, Page 38 of plats, filed as instrument #199033;
thence along the north line of said Section 10, N.89°55'39"W, 1575.77 to a point on the westerly right of way line of the future Spring Mountain Boulevard, and the Point of Beginning;
thence, continuing along said north line N.89°55'39"W, 1055.68 feet to the north 1/4 corner of said Section;
thence, continuing along said north line N.89°44'33"W, 749.97 feet to a point;
thence, departing said north line, S.41°01'44"E, 424.01 feet to a point;
thence, N.78°48'53"E, 378.82 feet to a point;
thence S.89°39'49"E, 1280.37 feet to a point on a non-tangent curve on the westerly right of way line of said future Spring Mountain Boulevard;
thence 47.50 feet along said curve to the left, having a radius of 870.00 feet, delta angle of 4°04'13"; and long chord of 47.50 feet bearing N.25°57'07"W, to a point of reverse curvature;
thence 242.41 feet along a curve to the right, having a radius of 720.00 feet, delta angle of 17°48'23"; and long chord of 241.44 feet bearing N.19°25'04"W, to a point of reverse curvature;
thence 77.55 feet along a curve to the left, having a radius of 770.00 feet, delta angle of 3°04'14"; and long chord of 77.52 feet bearing N.13°03'30"W, to a point of compound curvature;
thence 8.65 feet along said curve to the left, having a radius of 250.00 feet, delta angle of 1°58'55"; and long chord of 8.65 feet bearing N.16°58'38"W, to the Point of Beginning.
Containing 11.80 acres.

PARCEL 3:

Commencing at the northeast corner of said Section 10, as shown on the plat of Spring Mountain Ranch Subdivision No. 1, as recorded in Book 8, Page 38 of plats, filed as instrument #199033;
thence along the north line of said Section 10, N.89°55'39"W, 2631.45 feet to the north 1/4 corner of said Section;
thence, continuing along said north line N.89°44'33"W, 749.97 feet to the Point of Beginning;
thence, continuing along said north line N.89°44'33"W, 569.99 feet to the west 1/4 corner of said Section 10;
thence, departing said north line, S.07°09'08"W, 368.40 feet to a point;
thence East, 333.00 feet to a point;
thence, S.38°18'00"E, 228.99 feet to a point;
thence, S.24°38'32"W, 94.83 feet to a point;
thence, N.44°40'01"E, 368.47 feet to a point;
thence, N.51°08'00"E, 51.54 feet to a point;
thence, N.78°48'57"E, 122.87 feet to a point;
thence, N.41°01'44"E, 424.01 feet to the Point of Beginning.
Containing 6.94 acres.

APPROVAL OF THE CITY OF McCALL

I, THE UNDERSIGNED CITY CLERK IN AND FOR THE CITY OF McCALL, VALLEY COUNTY, IDAHO, HEREBY CERTIFY THAT AT A REGULAR MEETING OF THE CITY COUNCIL HELD ON THE _____ DAY OF _____, 2005, THIS PLAT OF "SPRING MOUNTAIN MEADOWS" WAS DUELY ACCEPTED AND APPROVED.

CITY CLERK - McCALL, IDAHO

APPROVAL OF THE CITY PLANNING AND ZONING COMMISSION

ACCEPTED AND APPROVED THIS _____ DAY OF _____, 2005, BY THE CITY OF McCALL PLANNING AND ZONING COMMISSION.

CHAIRMAN

All private roads and road rights of way, all easements, and all Open Space Parcels which are depicted on this Plat are dedicated for the use and enjoyment of the members of the Spring Mountain Meadows Association, together with their guests, invitees, and assigns, subject to the terms, conditions and reserved Declaration rights which are contained in the Supplemental Declaration, Mountain Meadows Drive, which is a public road, is hereby dedicated to the City of McCall for public use. All water lines, sewer lines and other facilities within Spring Mountain Meadows which are a part of the Water and Sewer Systems are hereby dedicated to the City of McCall, and a permanent and perpetual easement is hereby granted to the City of McCall to access, repair and maintain the same.

SILVERTIP LLC

By: Raymond E. Robnett, Member

ACKNOWLEDGMENT

STATE OF IDAHO,)
) ss.)
County of Valley.

On this _____ day of _____, 2005, before me, the undersigned, a Notary Public in and for said State, personally appeared Raymond E. Robnett, known or identified to me to be a managing member of SILVERTIP LLC, the limited liability company that executed the instrument or the person who executed the instrument on behalf of said limited liability company, and acknowledged to me that such company executed the same.

IN WITNESS WHEREOF, I have hereunto set my hand and affixed my official seal, the day and year in this certificate first above written.

NOTARY PUBLIC FOR IDAHO
My Commission Expires: _____

CERTIFICATE OF COUNTY SURVEYOR

I, JOHN RUSSELL, REGISTERED PROFESSIONAL LAND SURVEYOR FOR VALLEY COUNTY, IDAHO, DO HEREBY CERTIFY THAT I HAVE CHECKED THIS PLAT AND THAT IT COMPLIES WITH THE STATE OF IDAHO CODE RELATING TO PLATS AND SURVEYS.

VALLEY COUNTY SURVEYOR

CERTIFICATE OF SURVEYOR

I, RALPH MILLER, DO HEREBY CERTIFY THAT I AM A PROFESSIONAL LAND SURVEYOR IN THE STATE OF IDAHO, AND THAT THIS PLAT AS DESCRIBED IN THE "CERTIFICATE OF OWNERS" WAS DRAWN FROM THE FIELD NOTES OF A SURVEY MADE ON THE GROUND UNDER MY DIRECT SUPERVISION AND ACCURATELY REPRESENTS THE POINTS PLATTED HEREON AND IS IN CONFORMITY WITH THE STATE OF IDAHO CODE RELATING TO PLATS AND SURVEYS.

RALPH MILLER
IDAHO NO. 0877



APPROVAL OF THE CITY ENGINEER

I, THE UNDERSIGNED CITY ENGINEER IN AND FOR THE CITY OF McCALL, VALLEY COUNTY IDAHO, HEREBY APPROVE THIS PLAT OF "SPRING MOUNTAIN MEADOWS".

CITY ENGINEER - McCALL, IDAHO

APPROVAL OF THE CITY PUBLIC WORKS DIRECTOR

I, THE UNDERSIGNED CITY PUBLIC WORKS DIRECTOR IN AND FOR THE CITY OF McCALL, VALLEY COUNTY, IDAHO, HEREBY APPROVE THIS PLAT OF "SPRING MOUNTAIN MEADOWS".

CITY PUBLIC WORKS DIRECTOR - McCALL, IDAHO

CERTIFICATE OF COUNTY TREASURER

I, THE UNDERSIGNED, COUNTY TREASURER IN AND FOR THE COUNTY OF VALLEY, STATE OF IDAHO, PER THE REQUIREMENTS OF I.C. 50-1308, DO HEREBY CERTIFY THAT ANY AND ALL CURRENT AND/OR DELINQUENT COUNTY PROPERTY TAXES FOR THE PROPERTY INCLUDED IN THIS SUBDIVISION HAVE BEEN PAID IN FULL. THIS CERTIFICATION IS VALID FOR THE NEXT THIRTY (30) DAYS ONLY.

DATE _____ COUNTY TREASURER _____

SECESH ENGINEERING, INC.
McCall, Idaho