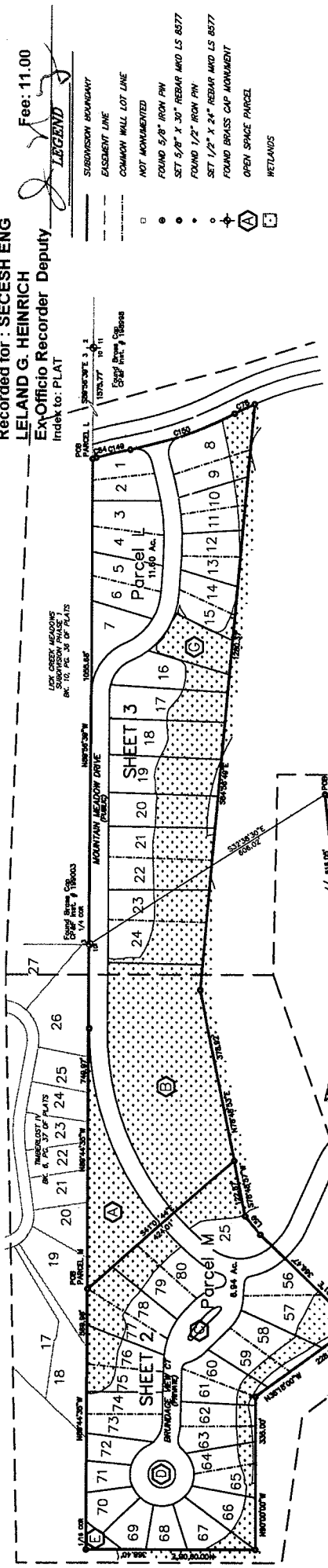


SPRING MOUNTAIN MEADOWS SUBDIVISION

Located in N 1/2 Section 10, T.18N., R.3E.,
 VALLEY COUNTY, CASCADE, IDAHO
 City of McCall, Valley County, Idaho

Instrument # 309021
 2006-05-22 02:39:14 No. of Pages: 6
 Recorded for: SECESH ENG
 LELAND G. HEINRICH
 EA-Officio Recorder Deputy
 Fee: 11.00
 Index to: PLAT



LEGEND

- SUBDIVISION BOUNDARY
- EASEMENT LINE
- COMMON WALL LOT LINE
- NOT MONUMENTED
- FOUND 5/8" IRON PIN
- SET 5/8" X 30" REBAR MID LS 8577
- FOUND 1/2" IRON PIN
- SET 1/2" X 24" REBAR MID LS 8577
- FOUND BRASS CAP MONUMENT
- OPEN SPACE PARCEL
- WETLANDS

MONUMENT CERTIFICATE

THIS IS TO CERTIFY THAT THIS PLAT IS BEING RECORDED UNDER THE PROVISIONS OF IDAHO CODE 50-1331 THRU 50-1333 AND THAT ALL INTERIOR MONUMENTS WILL BE SET WITHIN ONE YEAR FROM THE RECORDING DATE OF THIS PLAT.

HEALTH CERTIFICATE

Sanitary restrictions as required by Idaho Code, Title 50, Chapter 13 have been notified based on the State of Idaho, Department of Environmental Quality (DEQ) approval of the design plans and sanitary restrictions. It is noted that at the time of this approval, no drinking water or sewer/sanitary facilities were constructed. Building construction can be allowed with appropriate building permits if drinking water or sewer/sanitary facilities have been constructed or if the developer is simultaneously constructing drinking water or sewer/sanitary facilities. If the developer is simultaneously constructing drinking water or sewer/sanitary facilities, then sanitary restrictions may be reimposed, in accordance with Section 50-1326, Idaho Code, by the issuance of a certificate of approval, and no construction of any building or other requiring drinking water or sewer/sanitary facilities shall be allowed.

City of McCall (City) Resolution 06-08 established a new wastewater policy that controls the construction of any building or other requiring drinking water or sewer/sanitary facilities. Any building or other requiring drinking water or sewer/sanitary facilities is not a guarantee that sewer service will be provided to a lot in this approved project. Availability of individual sewer service connections is contingent upon obtaining building permits under the City's wastewater policy.

CHORD TABLE

CURVE	RADIUS	LENGTH	TANGENT	DELTA	BEARING	CHORD
C1A	250.00	1.60	1.60	90.00	N255.70°W	47.58
C1B	250.00	1.60	1.60	90.00	N255.70°W	47.58
C1C	770.00	7.75	38.81	54.81°E	N13.33°S8W	77.52
C1D	780.00	242.41	122.19	17.49°E	S18°05.03°E	241.44

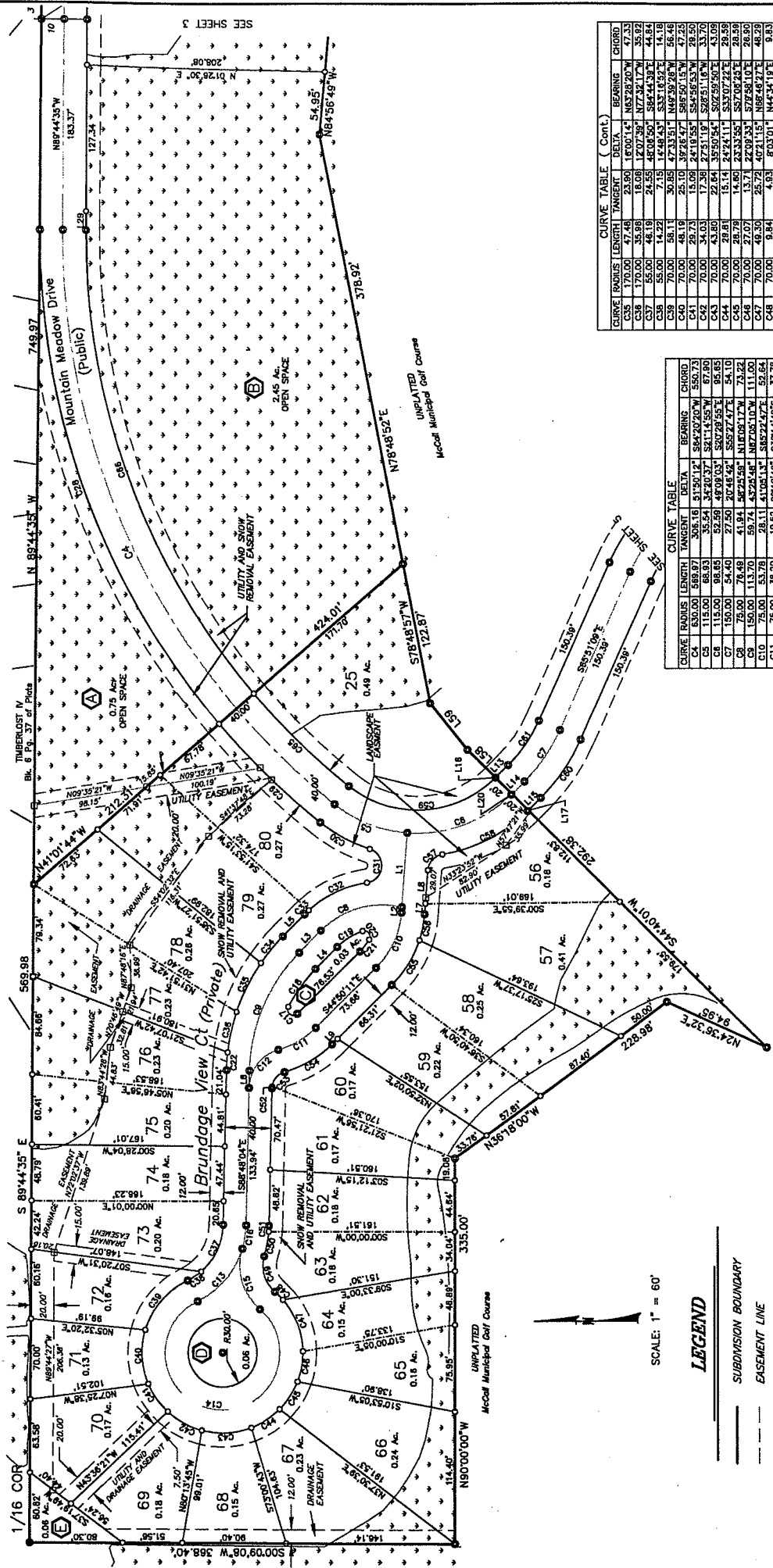
LINE TABLE

LINE	LENGTH	BEARING
LINE 1	31.24	S51°05'00"W



SPRING MOUNTAIN MEADOWS SUBDIVISION

Located in N 1/2 Section 10, T.18N., R.3E., BM
City of McCall, Valley County, Idaho



CURVE	RADIUS	LENGTH	TANGENT	DELTA	BEARING	CHORD
C34	170.00	47.44	23.90	15.00	S89°44'35"E	56.73
C35	170.00	55.98	18.08	12.07	N72°32'17"W	35.89
C36	55.00	48.19	24.55	48.08	S64°44'38"E	44.84
C37	55.00	14.22	7.15	14.48	S33°05'32"E	14.18
C38	70.00	58.11	30.85	47.33	N46°39'28"W	56.48
C39	70.00	48.19	25.10	37.26	S56°50'15"W	47.25
C40	70.00	27.73	13.98	24.19	S52°59'53"W	31.70
C41	70.00	43.80	22.64	35.90	S72°50'24"E	43.00
C42	70.00	28.81	15.14	24.24	S30°17'21"E	28.59
C43	70.00	28.79	14.60	24.33	S30°17'21"E	28.59
C44	70.00	27.07	13.71	22.09	S72°58'10"E	26.90
C45	70.00	48.30	25.72	47.21	N68°48'52"E	48.28
C46	70.00	39.84	4.93	6.03	N45°34'18"E	39.83
C47	50.00	34.03	18.11	64.90	S73°02'18"W	34.23
C48	50.00	24.01	12.50	17.17	S71°17'05"E	24.00
C49	50.00	17.3	8.88	6.35	N65°30'04"W	17.3
C50	15.00	17.42	9.64	8.32	N46°58'43"W	16.48
C51	15.00	48.38	24.73	28.10	S30°14'48"E	47.86
C52	15.00	45.96	23.44	27.42	S58°14'52"E	45.51
C53	15.00	20.03	11.83	7.30	N47°40'15"E	22.86
C54	15.00	20.03	11.83	7.30	N47°40'15"E	22.86
C55	15.00	13.44	6.47	8.28	S52°13'31"E	12.51
C56	15.00	13.44	6.47	8.28	S52°13'31"E	12.51
C57	15.00	13.44	6.47	8.28	S52°13'31"E	12.51
C58	15.00	13.44	6.47	8.28	S52°13'31"E	12.51
C59	15.00	13.44	6.47	8.28	S52°13'31"E	12.51
C60	15.00	13.44	6.47	8.28	S52°13'31"E	12.51
C61	15.00	13.44	6.47	8.28	S52°13'31"E	12.51
C62	15.00	13.44	6.47	8.28	S52°13'31"E	12.51
C63	15.00	13.44	6.47	8.28	S52°13'31"E	12.51
C64	15.00	13.44	6.47	8.28	S52°13'31"E	12.51
C65	15.00	13.44	6.47	8.28	S52°13'31"E	12.51
C66	15.00	13.44	6.47	8.28	S52°13'31"E	12.51

CURVE	RADIUS	LENGTH	TANGENT	DELTA	BEARING	CHORD
C4	830.00	669.97	306.16	51°50'12"	S84°20'20"W	556.73
C5	115.00	68.93	35.54	34°20'37"	S81°12'55"W	67.80
C6	115.00	68.93	35.54	34°20'37"	S81°12'55"W	67.80
C7	115.00	68.93	35.54	34°20'37"	S81°12'55"W	67.80
C8	75.00	74.48	41.84	28°52'45"	S82°27'47"E	73.22
C9	75.00	113.70	58.74	43°25'48"	N47°03'10"W	111.00
C10	75.00	38.20	19.54	27°13'24"	S87°14'48"E	37.78
C11	75.00	44.88	25.97	33°08'38"	N57°14'44"W	41.71
C12	75.00	61.73	37.73	47°09'21"	S48°27'12"E	60.00
C13	75.00	61.73	37.73	47°09'21"	S48°27'12"E	60.00
C14	50.00	25.20	12.73	28°34'41"	S87°20'05"W	54.77
C15	50.00	25.20	12.73	28°34'41"	S87°20'05"W	54.77
C16	50.00	25.20	12.73	28°34'41"	S87°20'05"W	54.77
C17	50.00	14.09	7.02	18°27'14"	S53°52'28"W	8.87
C18	130.00	40.87	20.80	18°00'41"	N54°22'34"W	40.70
C19	55.00	26.13	13.32	27°13'24"	N51°46'34"W	25.89
C20	55.00	17.19	8.61	18°32'45"	N51°46'34"W	16.39
C21	55.00	13.10	6.58	13°38'50"	S51°38'38"E	13.07
C22	170.00	15.43	7.72	51°15'27"	N68°17'05"W	15.42
C23	170.00	15.43	7.72	51°15'27"	N68°17'05"W	15.42
C24	150.00	63.72	32.35	24°20'24"	N52°45'50"W	63.26
C25	130.00	55.23	28.04	24°20'24"	N52°45'50"W	54.81
C26	850.00	485.28	243.11	41°00'48"	S69°45'01"W	455.41
C27	850.00	122.78	61.58	10°49'24"	S43°48'58"W	122.60
C28	135.00	49.24	24.90	20°51'00"	S77°58'13"W	48.97
C29	15.00	40.42	6.03	15°24'08"	S88°12'45"W	28.25
C30	85.00	56.82	29.29	34°18'08"	N38°17'45"W	56.09
C31	15.00	29.86	15.02	10°08'57"	N52°28'15"W	29.83

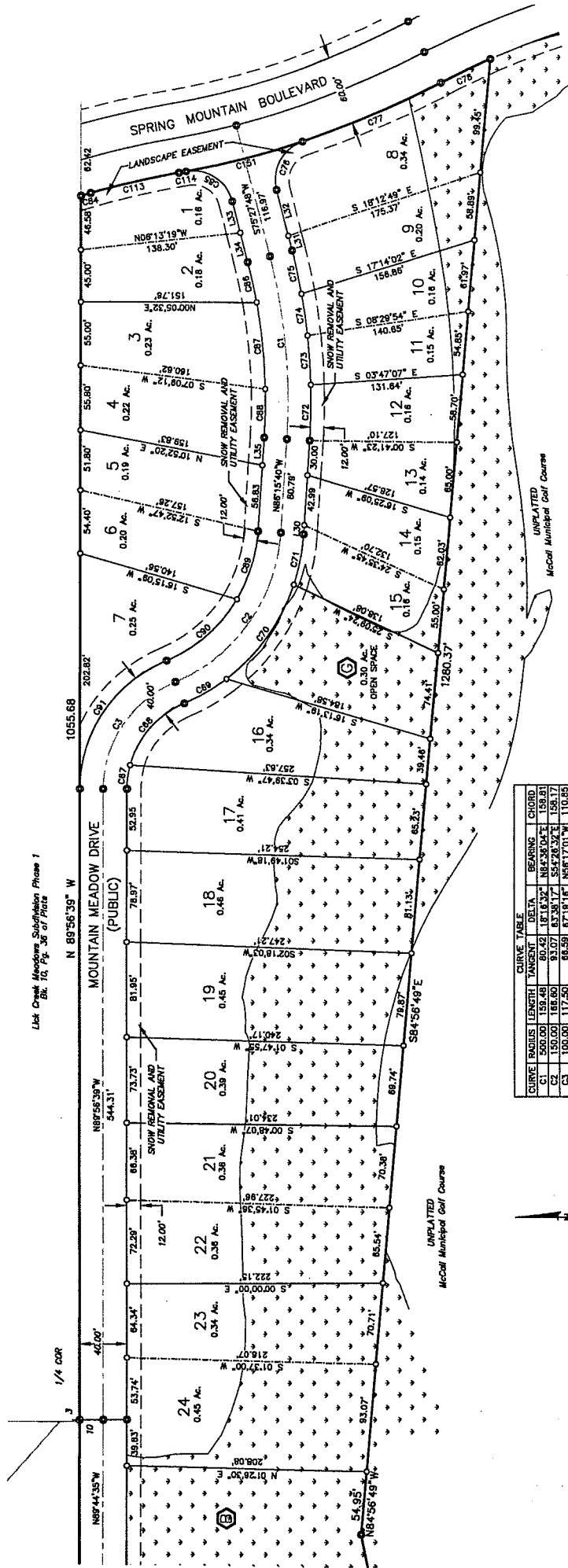
LINE	LENGTH	BEARING
L1	4.76	S85°35'24"E
L2	4.76	S85°35'24"E
L3	28.82	S45°22'18"E
L4	28.82	S45°22'18"E
L5	14.85	S88°48'04"E
L6	28.07	S85°55'24"E
L7	28.07	S85°55'24"E
L8	15.31	S45°20'12"E
L9	15.31	S45°20'12"E
L10	18.13	S45°20'12"E
L11	15.15	S45°04'28"E
L12	0.80	S45°04'28"E
L13	0.88	S45°04'28"E
L14	0.88	S45°04'28"E
L15	10.74	N68°44'35"W
L16	51.54	S51°08'00"W

SCALE: 1" = 60'

- LEGEND**
- SUBDIVISION BOUNDARY
 - - - EASEMENT LINE
 - COMMON WALL LOT LINE
 - NOT MONUMENTED
 - FOUND 5/8" IRON PIN
 - SET 5/8" X 30" REBAR MKD LS 8577
 - FOUND 1/2" IRON PIN
 - SET 1/2" X 24" REBAR MKD LS 8577
 - FOUND BRASS CAP MONUMENT
 - OPEN SPACE PARCEL
 - ◻ WETLANDS

SPRING MOUNTAIN MEADOWS SUBDIVISION

Located in N 1/2 of Section 10, T.18N., R.3E., BM
City of McCall, Valley County, Idaho



Let Draft Machine Subdivision Phase 1
Blk. 10, Pg. 36 of Plat

SEE SHEET 2

CURVE	RADIUS	LENGTH	TANGENT	DELTA	BEARING	CHORD
C1	500.00	159.48	80.42	18.1832°	N84°38'04"E	159.81
C2	150.00	186.60	93.07	87.3817°	S54°28'33"E	198.17
C3	100.00	117.50	66.59	67.1816°	N66°17'01"W	110.95
C4	100.00	117.50	66.59	67.1816°	N66°17'01"W	110.95
C5	60.00	20.84	10.36	14.4638°	N87°33'11"W	20.58
C6	60.00	20.84	10.36	14.4638°	N87°33'11"W	20.58
C7	170.00	42.49	21.26	14.1817°	S39°47'02"E	42.38
C8	170.00	42.49	21.26	14.1817°	S39°47'02"E	42.38
C9	170.00	42.49	21.26	14.1817°	S39°47'02"E	42.38
C10	170.00	42.49	21.26	14.1817°	S39°47'02"E	42.38
C11	170.00	42.49	21.26	14.1817°	S39°47'02"E	42.38
C12	170.00	42.49	21.26	14.1817°	S39°47'02"E	42.38
C13	170.00	42.49	21.26	14.1817°	S39°47'02"E	42.38
C14	170.00	42.49	21.26	14.1817°	S39°47'02"E	42.38
C15	170.00	42.49	21.26	14.1817°	S39°47'02"E	42.38
C16	170.00	42.49	21.26	14.1817°	S39°47'02"E	42.38
C17	170.00	42.49	21.26	14.1817°	S39°47'02"E	42.38
C18	170.00	42.49	21.26	14.1817°	S39°47'02"E	42.38
C19	170.00	42.49	21.26	14.1817°	S39°47'02"E	42.38
C20	170.00	42.49	21.26	14.1817°	S39°47'02"E	42.38
C21	170.00	42.49	21.26	14.1817°	S39°47'02"E	42.38
C22	170.00	42.49	21.26	14.1817°	S39°47'02"E	42.38
C23	170.00	42.49	21.26	14.1817°	S39°47'02"E	42.38
C24	170.00	42.49	21.26	14.1817°	S39°47'02"E	42.38

LEGEND

- SUBDIVISION BOUNDARY
- - - EASEMENT LINE
- - - COMMON WALL LOT LINE
- NOT MONUMENTED
- FOUND 5/8" IRON PIN
- SET 5/8" X 30" REBAR MKD LS
- FOUND 1/2" IRON PIN
- SET 1/2" X 24" REBAR MKD LS
- FOUND BRASS CAP MONUMENT
- OPEN SPACE PARCEL
- WETLANDS

SCALE: 1" = 60'

LINE	LENGTH	BEARING
L1	1055.68	N89°56'39"W
L2	202.82	S02°18'03"W
L3	78.87	S84°56'49"E
L4	52.55	S02°18'03"W
L5	78.87	S84°56'49"E
L6	1055.68	N89°56'39"W
L7	1055.68	N89°56'39"W
L8	1055.68	N89°56'39"W
L9	1055.68	N89°56'39"W
L10	1055.68	N89°56'39"W
L11	1055.68	N89°56'39"W
L12	1055.68	N89°56'39"W
L13	1055.68	N89°56'39"W
L14	1055.68	N89°56'39"W
L15	1055.68	N89°56'39"W
L16	1055.68	N89°56'39"W
L17	1055.68	N89°56'39"W
L18	1055.68	N89°56'39"W
L19	1055.68	N89°56'39"W
L20	1055.68	N89°56'39"W
L21	1055.68	N89°56'39"W
L22	1055.68	N89°56'39"W
L23	1055.68	N89°56'39"W
L24	1055.68	N89°56'39"W

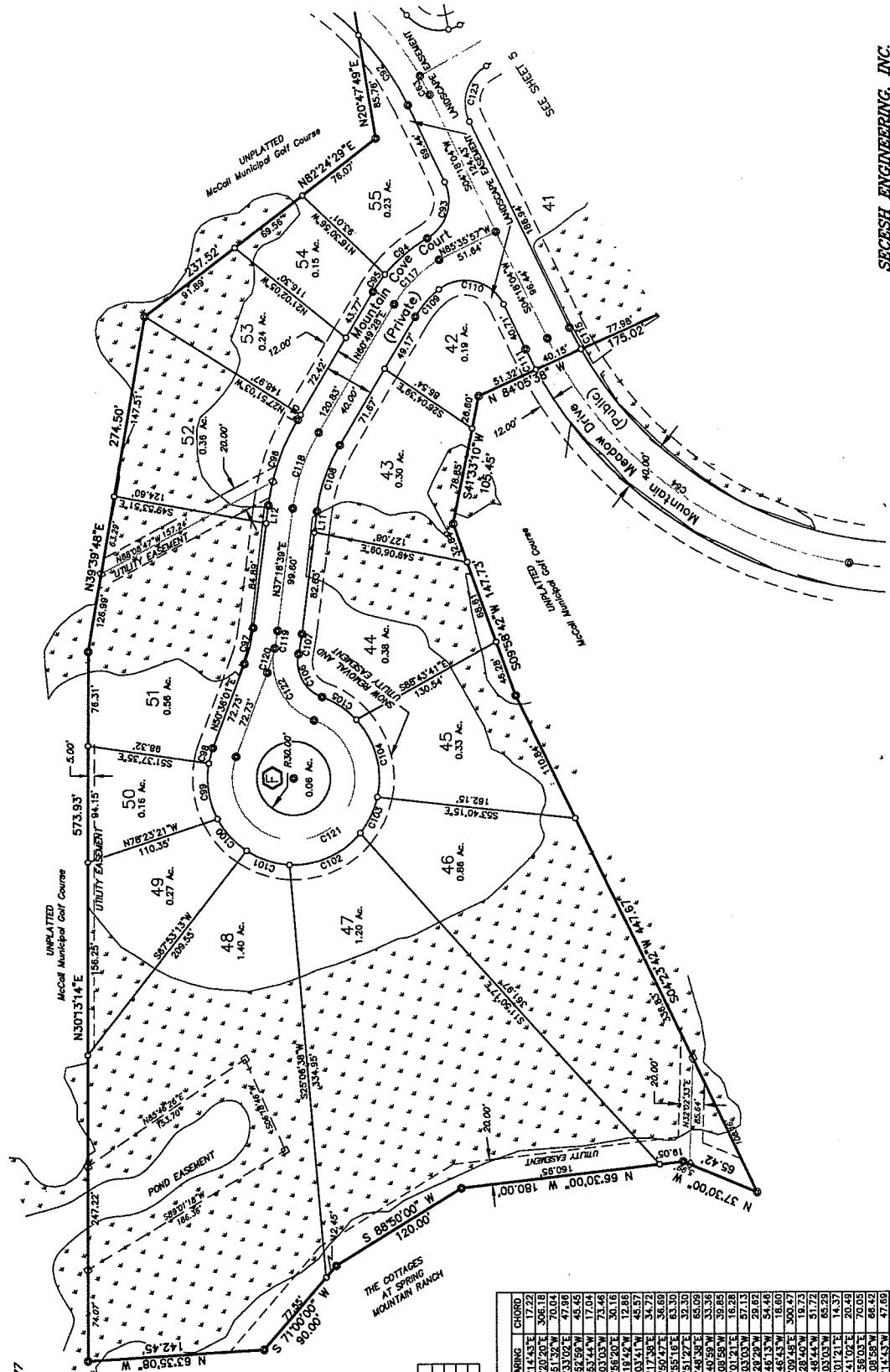
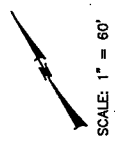
SECFESH ENGINEERING, INC.
McCall, Idaho

SPRING MOUNTAIN MEADOWS SUBDIVISION

Located in N 1/2 Section 10, T.18N., R.3E.,
City of McCall, Valley County, Idaho

LEGEND

- SUBDIVISION BOUNDARY
- EASEMENT LINE
- COMMON WALL LOT LINE
- NOT MONUMENTED
- FOUND 5/8" IRON PIN
- SET 5/8" X 30" REBAR MKD LS 8577
- FOUND 1/2" IRON PIN
- SET 1/2" X 24" REBAR MKD LS 8577
- FOUND BRASS CAP MONUMENT
- OPEN SPACE PARCEL
- WETLANDS

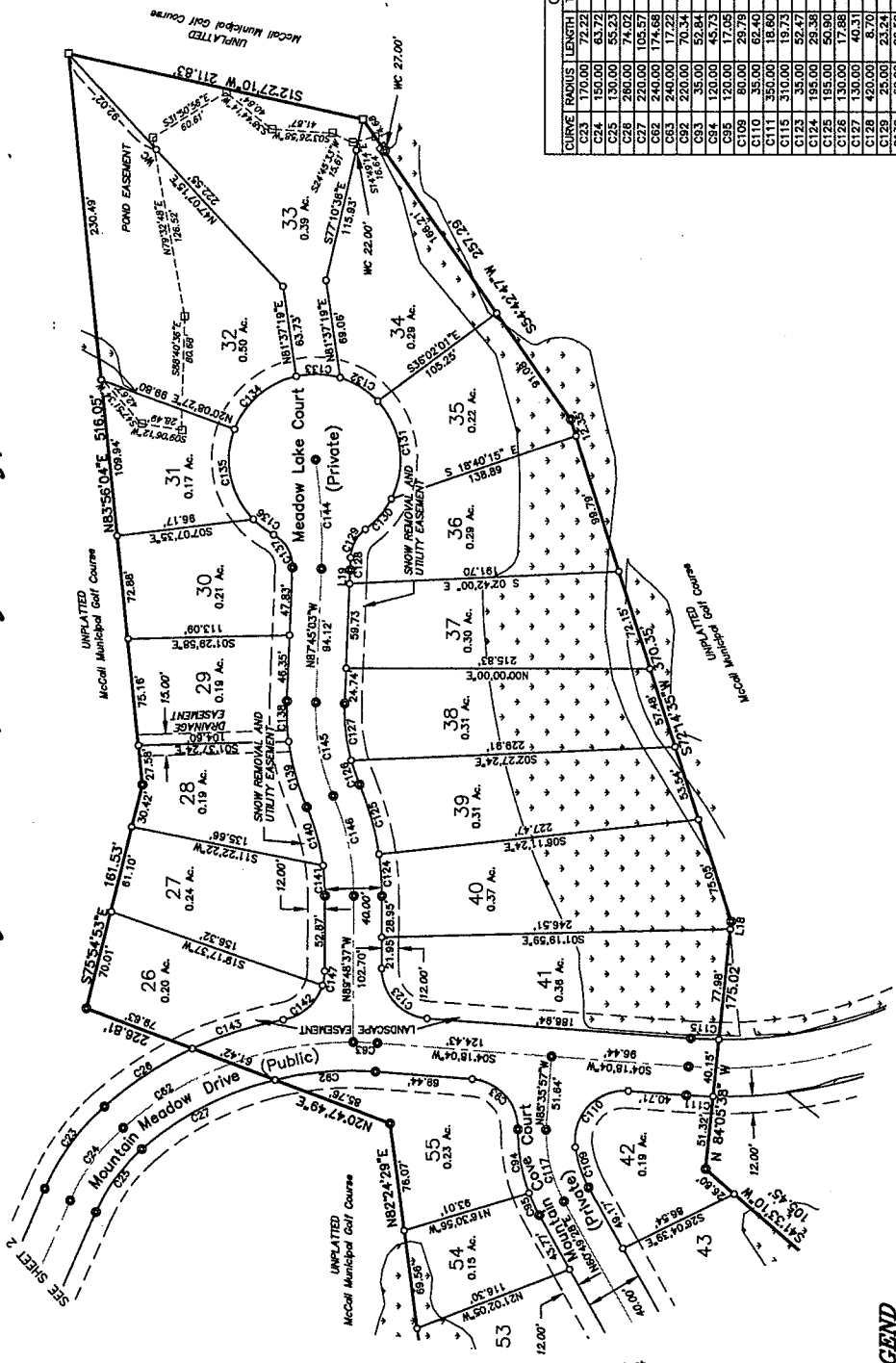


LINE	LENGTH	BEARING
L10	14.97	N82°43'20"E
L12	14.71	N87°18'35"E

CURVE	RADIUS	LENGTH	TANGENT	DELTA	BEARINGS	CROSS
C01	35.00	70.34	35.47	187.81	N87°18'35"E	306.16
C02	20.00	70.34	35.47	187.81	N87°18'35"E	306.16
C03	35.00	70.34	35.47	187.81	N87°18'35"E	306.16
C04	120.00	45.73	23.14	21.50	N77°32'59"W	45.45
C05	190.00	73.98	37.52	23.92	S49°03'03"W	73.46
C06	70.00	12.88	6.48	10.34	S45°56'20"E	12.69
C07	190.00	50.23	25.12	15.18	S45°56'20"E	50.16
C08	70.00	35.69	17.84	9.09	S45°56'20"E	35.71
C09	70.00	35.69	17.84	9.09	S45°56'20"E	35.71
C10	70.00	65.66	35.48	53.45	S41°50'47"E	63.30
C11	70.00	32.58	16.60	26.40	N85°51'27"E	32.30
C12	70.00	67.70	36.76	55°24'55"	N14°48'38"E	65.09
C13	35.00	33.69	17.18	27°34'15"	N87°40'59"W	33.36
C14	35.00	43.68	26.65	33°14'11"	S01°08'58"W	39.85
C15	170.00	15.24	7.62	15.18	S29°25'14"E	15.13
C16	150.00	14.37	7.19	14.30	S29°25'14"E	14.37
C17	150.00	20.51	10.27	20.48	N46°21'02"E	20.48
C18	50.00	28.55	14.28	27°10'49"	S84°56'03"E	28.55
C19	50.00	72.84	44.42	63°14'11"	S01°08'58"W	66.42
C20	35.00	35.00	35.57	85°53'20"	S47°14'53"W	47.69

SPRING MOUNTAIN MEADOWS SUBDIVISION

Located in N 1/2 Section 10, T.18N., R.3E.,
City of McCall, Valley County, Idaho



SEE SHEET 4

LEGEND

- SUBDIVISION BOUNDARY
- - - EASEMENT LINE
- - - COMMON WALL LOT LINE
- NOT MONUMENTED
- FOUND 5/8" IRON PIN
- SET 5/8" X 30" REBAR MKD LS 8577
- FOUND 1/2" IRON PIN
- SET 1/2" X 24" REBAR MKD LS 8577
- ⊕ FOUND BRASS CAP MONUMENT
- OPEN SPACE PARCEL
- WETLANDS

SCALE: 1" = 60'

CURVE	RADIUS	LENGTH	TANGENT	DELTA	BEARING	CHORD
C23	170.00	72.22	36.66	24.7026°	N53.4055°W	71.66
C24	150.00	63.72	32.35	24.7026°	N53.4055°W	63.25
C25	130.00	55.23	28.04	24.7026°	N53.4055°W	54.81
C26	280.00	74.02	37.26	16.1840°	N32.2122°W	73.77
C27	220.00	105.57	53.62	27.7835°	N27.4555°W	104.56
C28	240.00	174.68	91.41	41.4205°	N22.3945°W	176.85
C29	220.00	70.34	35.47	18.1911°	N47.1432°W	70.04
C30	35.00	52.84	23.92	8.6788°	N73.3021°E	47.96
C31	35.00	52.84	23.92	8.6788°	N73.3021°E	47.96
C32	35.00	52.84	23.92	8.6788°	N73.3021°E	47.96
C33	35.00	52.84	23.92	8.6788°	N73.3021°E	47.96
C34	35.00	52.84	23.92	8.6788°	N73.3021°E	47.96
C35	35.00	52.84	23.92	8.6788°	N73.3021°E	47.96
C36	35.00	52.84	23.92	8.6788°	N73.3021°E	47.96
C37	35.00	52.84	23.92	8.6788°	N73.3021°E	47.96
C38	35.00	52.84	23.92	8.6788°	N73.3021°E	47.96
C39	35.00	52.84	23.92	8.6788°	N73.3021°E	47.96
C40	35.00	52.84	23.92	8.6788°	N73.3021°E	47.96
C41	35.00	52.84	23.92	8.6788°	N73.3021°E	47.96
C42	35.00	52.84	23.92	8.6788°	N73.3021°E	47.96
C43	35.00	52.84	23.92	8.6788°	N73.3021°E	47.96
C44	35.00	52.84	23.92	8.6788°	N73.3021°E	47.96
C45	35.00	52.84	23.92	8.6788°	N73.3021°E	47.96
C46	35.00	52.84	23.92	8.6788°	N73.3021°E	47.96
C47	35.00	52.84	23.92	8.6788°	N73.3021°E	47.96

LINE	LENGTH	BEARING
L18	5.57	N84°05'30"W
L19	8.66	N87°45'03"W

SPRING MOUNTAIN MEADOWS SUBDIVISION

Located in N 1/2 Section 10, T.18N., R.3E.,
City of McCall, Valley County, Idaho

CERTIFICATE OF COUNTY SURVEYOR

I, JOHN RUSSELL, REGISTERED PROFESSIONAL LAND SURVEYOR FOR VALLEY COUNTY, IDAHO, DO HEREBY CERTIFY THAT I HAVE CHECKED THIS PLAT AND THAT IT COMPLES WITH THE STATE OF IDAHO CODE RELATING TO PLATS AND SURVEYS.

VALLEY COUNTY SURVEYOR

APPROVAL OF THE CITY OF McCALL

I, THE UNDERSIGNED CITY CLERK IN AND FOR THE CITY OF McCALL, VALLEY COUNTY, IDAHO, HEREBY CERTIFY THAT AT A REGULAR MEETING OF THE CITY COUNCIL HELD ON THE _____ DAY OF SPRING MOUNTAIN MEADOWS' INS. WAS DULY RECEIVED AND APPROVED.

CITY CLERK - McCALL, IDAHO

CERTIFICATE OF SURVEYOR

I, RALPH MILLER, DO HEREBY CERTIFY THAT I AM A PROFESSIONAL LAND SURVEYOR IN THE STATE OF IDAHO, AND THAT THIS PLAT AS DESCRIBED IN THE CERTIFICATE OF OWNERS' HAS BEEN PREPARED BY ME OR UNDER MY CLOSE PERSONAL SUPERVISION AND IS IN CONFORMANCE WITH THE STATE OF IDAHO CODE RELATING TO PLATS AND SURVEYS.

RALPH MILLER
IDAHO NO. 6577



APPROVAL OF THE CITY ENGINEER

I, THE UNDERSIGNED CITY ENGINEER IN AND FOR THE CITY OF McCALL, VALLEY COUNTY, IDAHO, HEREBY APPROVE THIS PLAT OF SPRING MOUNTAIN MEADOWS.

CITY ENGINEER - McCALL, IDAHO

APPROVAL OF THE CITY PUBLIC WORKS DIRECTOR

I, THE UNDERSIGNED CITY PUBLIC WORKS DIRECTOR IN AND FOR THE CITY OF McCALL, VALLEY COUNTY, IDAHO, HEREBY APPROVE THIS PLAT OF SPRING MOUNTAIN MEADOWS.

CITY PUBLIC WORKS DIRECTOR - McCALL, IDAHO

CERTIFICATE OF COUNTY TREASURER

I, THE UNDERSIGNED COUNTY TREASURER IN AND FOR THE COUNTY OF VALLEY, STATE OF IDAHO, HEREBY CERTIFY THAT THE PROPERTY DESCRIBED IN THIS PLAT IS NOT SUBJECT TO ANY CITY AND/OR DEPARTMENT COUNTY PROPERTY TAXES FOR THE PROPERTY INCLUDED IN THIS SUBDIVISION HAVE BEEN PAID IN FULL. THIS CERTIFICATION IS VALID FOR THE NEXT TRIMESTER ONLY.

COUNTY TREASURER

DATE _____

APPROVAL OF THE CITY PLANNING AND ZONING COMMISSION

ACCEPTED AND APPROVED THIS _____ DAY OF _____, 2005, BY THE CITY OF McCALL PLANNING AND ZONING COMMISSION.

CHAIRMAN

All public roads and road rights of way, of ownership of the Open Space Reserve which are depicted on this plat, together with their grants, fixtures, and easements, subject to the terms, conditions and reserved Decedent rights which are contained in the Supplemental Declaration, Mountain Meadow Drive, and other facilities within Spring Mountain Meadows which are a part of the Water and Sewer Systems are hereby dedicated to the City of McCall, and a permanent and perpetual easement is hereby granted to the City of McCall to access, repair and maintain the same.

By: Raymond E. Robnett, Member

ACKNOWLEDGEMENT

STATE OF IDAHO,)
County of Valley,) ss.
I, _____,)
City of _____,)
do hereby certify that _____, 2005, before me, the undersigned a Notary Public in and for the State of Idaho, personally appeared _____, a managing member of SALVETIP LLC, the limited liability company that executed the instrument or the person who executed the instrument on behalf of said limited liability company, and acknowledged to me that such company executed the same.

IN WITNESS WHEREOF, I have hereunto set my hand and affixed my official seal, the day and year in this certificate first above written.

RAYMOND E. ROBNETT, Notary Public
My Commission Expires _____

CERTIFICATE OF OWNER

OF THE PROPERTY HEREINFTER DESCRIBED:
SALVETIP LLC
SPRING MOUNTAIN MEADOWS SUBDIVISION

Three parcels of land, known as parcels 71, 72 and 73, containing a total of 31.39 acres, situated in the City of McCall, Valley County, Idaho, more particularly described as follows:

- Parcel 71: Commencing at the northeast corner of said Section 10, as shown on the plat of Spring Mountain Meadows Subdivision No. 1, as recorded in Book 4, Page 38 of plats, filed as Instrument #19003; thence along the north line of said Section 10, N.89°55'39"W., 2631.45 feet to the Point of Beginning;
 - thence southerly along said north line, S.125°39'30"E., 606.02 feet to the Point of Beginning;
 - thence S.12°27'10"W., 211.83 feet to a point;
 - thence S.54°49'47"W., 257.29 feet to a point;
 - thence N.64°01'58"W., 178.02 feet to a point;
 - thence S.41°33'10"W., 105.45 feet to a point;
 - thence S.89°49'49"W., 147.73 feet to a point;
 - thence N.17°30'00"W., 45.40 feet to a point;
 - thence N.65°30'00"W., 180.00 feet to a point;
 - thence S.65°50'00"W., 120.00 feet to a point;
 - thence S.71°00'00"W., 80.00 feet to a point;
 - thence N.30°13'14"E., 573.83 feet to a point;
 - thence N.39°39'48"E., 274.50 feet to a point;
 - thence N.82°24'29"E., 237.82 feet to a point;
 - thence S.25°54'33"E., 161.53 feet to a point;
 - thence N.83°58'14"E., 516.05 feet to the Point of Beginning.
- Containing 12.85 acres.

Parcel 72: Commencing at the southwest corner of said Section 10, as shown on the plat of Spring Mountain Meadows Subdivision No. 1, as recorded in Book 4, Page 38 of plats, filed as Instrument #19003;

- thence along the north line of said Section 10, N.89°55'39"W., 1579.77 to a point on the westerly right of way line of the future Spring Mountain Boulevard, and the Point of Beginning, continuing along said north line N.89°55'39"W., 1035.68 feet to the north 1/4 corner of said Section;
 - thence, continuing along said north line, N.89°44'15"W., 749.97 feet to a point;
 - thence, continuing along said north line, S.41°14'43"E., 424.01 feet to a point;
 - thence, N.79°49'53"E., 376.52 feet to a point;
 - thence, S.84°58'49"E., 1280.37 feet to a point on a non-tangent curve on the westerly right of way line of said future Spring Mountain Boulevard, having a radius of 670.00 feet, delta angle of 27°59'54";
 - thence, along the north line of said future Spring Mountain Boulevard, bearing a radius of 670.00 feet, delta angle of 4°14'11" and long chord of 47.59 feet bearing N.25°57'07"W., to a point of reverse curvature;
 - thence, along a curve to the south, having a radius of 780.00 feet, delta angle of 17°49'23" and long chord of 241.44 feet bearing N.97°05'04"W., to a point of reverse curvature;
 - thence, along a curve to the west, having a radius of 770.00 feet, delta angle of 17°50'57" and long chord of 241.44 feet bearing N.15°03'05"W., to a point of compound curvature;
 - thence, 8.65 feet along said curve to the left, having a radius of 250.00 feet, delta angle of 1°30'57" and long chord of 8.65 feet bearing N.16°55'32"W., to the Point of Beginning.
- Containing 11.60 acres.

Parcel 73: Commencing at the northeast corner of said Section 10, as shown on the plat of Spring Mountain Meadows Subdivision No. 1, as recorded in Book 4, Page 38 of plats, filed as Instrument #19003;

- thence along the north line of said Section 10, N.89°55'39"W., 2631.45 feet to the north 1/4 corner of said Section;
 - thence, continuing along said north line, N.89°44'15"W., 569.90 feet to the west 1/16 corner of said Section 10;
 - thence, along said north line, S.07°02'00"W., 386.40 feet to a point;
 - thence, S.30°19'00"W., 228.98 feet to a point;
 - thence, S.74°35'32"W., 54.83 feet to a point;
 - thence, N.44°42'07"E., 385.47 feet to a point;
 - thence, N.79°49'53"E., 223.87 feet to a point;
 - thence, N.41°01'44"W., 424.01 feet to the Point of Beginning.
- Containing 6.94 acres.